

made in the USA
with US & imported parts



OAKWORKS[®] MEDICAL PRODUCTS



EMERGENCY FIELD SOLUTIONS FOR BEDS



Oakworks Bed
500 lb Rating
FDA Listed



PX150 Bed,
PX200 Bed
400 lb Rating
FDA Listed



Alliance
Portable

Pricing available in USA only

923 East Wellspring Road, New Freedom, PA 17349

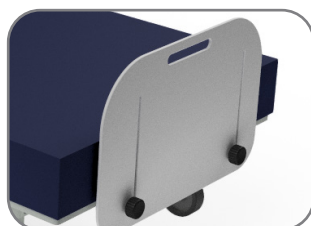
Oakworks Bed



Oakworks Bed
500 lb Weight Rating
FDA Listed
(shown with optional foot board)



Shown with Optional Side Rails and Foot Board



Adjustable and Removable Plastic Foot and Head Boards

Features:

- 500 lb Patient Weight Capacity
- Ships Assembled
- Mattress Included
- Manual Back Rest 0-60 degrees
- Double Locking 5" Casters
- FDA Listed

Bed Specifications:

PATIENT WEIGHT RATING	500 lbs
DIMENSIONS	19"H x 36"W x 80"L
MATTRESS	6" Thick, Sealed and Removable, Water Resistant, ISO 10993 CA 117
BASE	IPX4 Rated Finish on Hardwood, Meets FDA Standards
WARRANTY	3 Years Parts
PRODUCT WEIGHT	110 lbs

Price **\$730**
Part No. 82289

Options:

Set of Two
Plastic Adjustable Side Rails
9"H x 30"L
Part No. 82224
\$155

Foot Board or
Head Board
9"H x 30"L
Part No. 82293
\$80

made in the USA
with US & imported parts



*FDA Listed

 **YouTube** *View Product video*

Cover meets the requirements of ISO 10993
Biological Evaluation of Medical devices & passes
testing for Cytotoxicity, Skin Irritation & Sensitization.

Availability of specific colors is limited.
We reserve the right to substitute
other colors to fill your order

Sapphire

Sky Blue

For more information, call 717-759-3146 or email orders@oakworks.com

PX150

Price **\$1,205**
Part No. 82226



Electric Height Adjustments
Gas Assist Back Rest
(Shown with optional foot board)



Shown with Optional Side
Rails and Foot Board



Adjustable and Removable
Plastic Foot Board



Optional casters allow the
bed to be easily moved
around in a room.

Features:

- Electric Height Adjustments
- Gas Assist Back Rest
- 400 lb Patient Weight Capacity
- Ships Fully Assembled
- Mattress Included
- Wheels On One End to Facilitate Movement
Optional Casters Available for Increased Mobility
- FDA Listed

Table Specifications:

PATIENT WEIGHT RATING	400 lbs
ELECTRIC HEIGHT RANGE	23" - 40"H
GAS ASSIST BACK REST	0-90 Degrees
DIMENSIONS	23" - 40"H x 36"W x 80"L
MATTRESS	6" Thick, Sealed and Removable, Water Resistant, ISO 10993 CA 117
BASE	Powder Coated Steel
WARRANTY	3 Years Parts, 2 Years Labor
PRODUCT WEIGHT	200 lbs

Options:

Set of Two
Plastic Adjustable Side Rails
9"H x 30"L
Part No. 82224
\$155

Foot Board
9"H x 30"L
Part No. 82293
\$80

made in the USA
with US & imported parts



*FDA Listed

 **YouTube** *View Product video*

Cover meets the requirements of ISO 10993
Biological Evaluation of Medical devices & passes
testing for Cytotoxicity, Skin Irritation & Sensitization.

Availability of specific colors is limited.

We reserve the right to substitute
other colors to fill your order

Sapphire

Sky Blue

For more information, call 717-759-3146 or email orders@oakworks.com

PX200

Price **\$1,555**
Part No. 82227



Electric Back Rest
Electric Height Adjustments
(Shown with optional foot board)

Features:

- Electric Height Adjustments
- Electric Back Rest
- 400 lb Patient Weight Capacity
- Mattress Included
- Wheels On One End to Facilitate Movement
Optional Casters Available for Increased Mobility
- FDA Listed

Table Specifications:

PATIENT WEIGHT RATING	400 lbs
ELECTRIC HEIGHT RANGE	23" - 40"H
ELECTRIC BACK REST	0-75 Degrees
DIMENSIONS	23" - 40"H x 36"W x 80"L
MATTRESS	6" Thick, Removable, Water Resistant, ISO 10993, CA 117
BASE	Powder Coated Steel
WARRANTY	3 Years Parts, 2 Years Labor
PRODUCT WEIGHT	200 lbs



Shown with Optional Side
Rails and Foot Board



Bolster prevents patients from
sliding down.



Optional casters allow the
bed to be easily moved
around in a room.

Options:

Set of Two Side Rails 9"H x 30"L Part No. 82224 \$155	Foot Board or Head Board 9"H x 30"L Part No. 82293 \$80	Set of Four Locking Twin Casters Part No. 63400 \$115
---	--	---

made in the USA
with US & imported parts



*Not FDA Listed

 **YouTube** *View Product video*

Cover meets the requirements of ISO 10993
Biological Evaluation of Medical devices & passes
testing for Cytotoxicity, Skin Irritation & Sensitization.

Availability of specific colors is limited.
We reserve the right to substitute
other colors to fill your order

Sapphire

Sky Blue

For more information, call 717-759-3146 or email orders@oakworks.com

Alliance



Foldable Table
with Back Rest
Height Range
24" - 34"

*Not FDA Listed

made in the USA
with US & imported parts



Table Specifications:

PATIENT WEIGHT RATING	400 lbs
PRODUCT WEIGHT	38 lbs
HEIGHT RANGE	24"-34"H
DIMENSIONS	30"W x 73"L
TOP	Manual Back Rest
PADDING	2.25"H Sealed
BASE CONSTRUCTION	Hardwood with Waterproof, Easily Disinfected Finish
SHIPS FULLY ASSEMBLED	
WARRANTY	2 Years Parts

Part No. 82292

Price **\$430**

One Table



Foldable Table
Height Range
24" - 34"

made in the USA
with US & imported parts



*Not FDA Listed

Cover meets the requirements of ISO 10993
Biological Evaluation of Medical devices & passes
testing for Cytotoxicity, Skin Irritation & Sensitization.

Availability of specific colors is limited.
We reserve the right to substitute
other colors to fill your order

PATIENT WEIGHT RATING	400 lbs
PRODUCT WEIGHT	30 lbs
HEIGHT RANGE	24"-34"H
DIMENSIONS	30"W x 73"L
PADDING	2.25"H Sealed
BASE CONSTRUCTION	Hardwood with Waterproof, Easily Disinfected Finish
SHIPS FULLY ASSEMBLED	
WARRANTY	2 Years Parts

Part No. 82290

Price **\$365**

Sapphire

Sky Blue

For more information, call 717-759-3146 or email orders@oakworks.com

Prone Pillow



- Designed to maximize air flow with open base design
- Low profile design with soft pads supports compliance for extended periods
- Lightweight and compact design
- Warranty: 1 Year



Made in China

PART NO. 66180 Price **\$85**

FDA Listed

 **YouTube** *View Product video*

Pillow Cover

- Medical Grade Cover
- Standard Size
- Hygienic Way to Use Pillows
- Warranty: 1 Year



PART NO. 59226

Price **\$26**

Wedge Bolster

- Medical Grade Cover
- 24" W x 10" H x 24" L
- Backrest or Leg Support with a 36° Incline
- Warranty: 1 Year

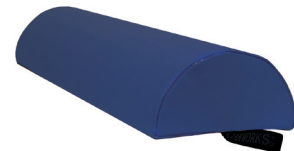


PART NO. 41739

Price **\$75**

Bolster

- Medical Grade Cover
- 6" Half Round
- 3" H x 26" L
- Warranty: 1 Year



PART NO. 32045

Price **\$32**

Stool



- Medical Grade Covering
- 300 lb Weight Rating
- High Quality, Long Lasting Foam
- Pneumatic Height Adjustment
- Warranty: 1 Year

PART NO. 60339

Price **\$105**

Full Size Mattress

Replacement Mattress for our Oakworks bed, it can be used on any standard size bed. In addition, it can be used on the floor if tables are not available. Cover meets the requirements of ISO 10993 Biological Evaluation of Medical devices & passes testing for Cytotoxicity, Skin Irritation & Sensitization. Pad size - **36"W X 6"H X 80"L**
Warranty: 1 Year



PART NO. 82218

Price **\$190**

made in the USA
with US & imported parts



Manufacturer reserves the right to substitute colors at our discretion based on inventory

For more information, call 717-759-3146 or email orders@oakworks.com