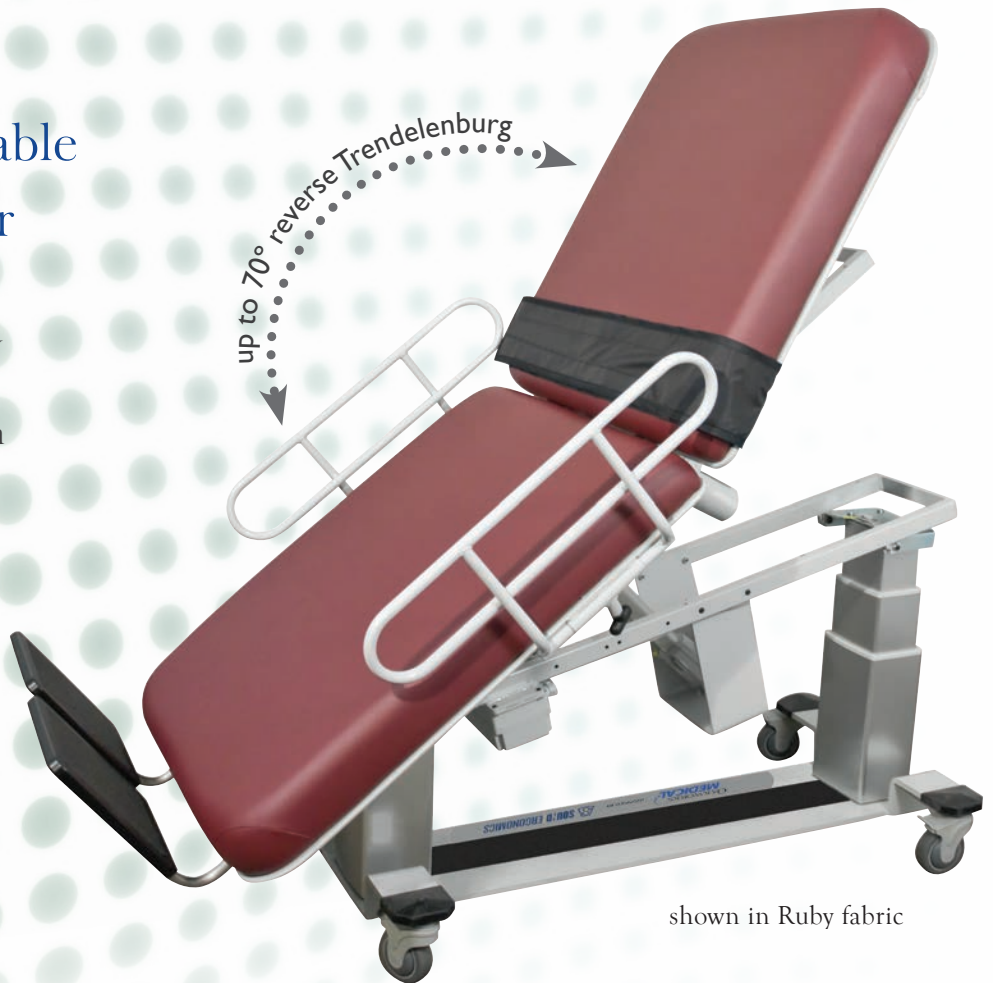


# VASCULAR TABLE with fowler

- Dual towers & electric fowler makes 70° reverse Trendelenburg a reality†
- Safely position clients for Venous Reflux studies.
- Split foot board design allows non-weight bearing exams and fold down out of the way for carotid artery exams.

“Finally we have a table designed for vascular ultrasound!”

Patricia A Poe, BA RVT FSVU  
Director Noninvasive Vascular  
Laboratory Services, UC Health



shown in Ruby fabric

Inspired by the leading ergonomic experts in sonography



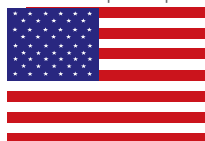
**SOUND | ERGONOMICS**

- Decrease sonographer injury
- Features minimize exam times



FM584901

made in the USA  
with US & imported parts

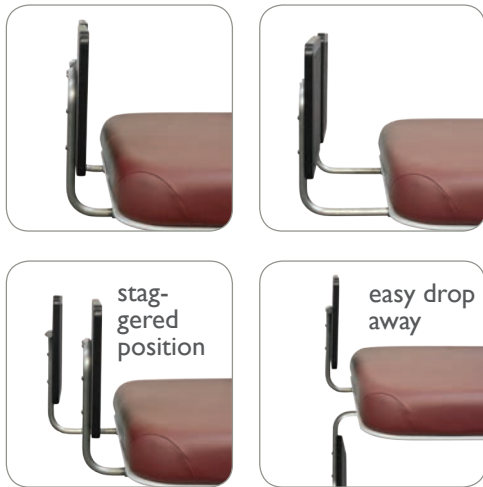


**OAKWORKS®**  
**MEDICAL**  
*Position for Success*

# VASCULAR TABLE with fowler

## Recommended for:

- Venous reflux studies
- All other vascular exams
- Abdominal & superficial structures exams
- Musculoskeletal exams
- Biopsies



### “Finally we have a table designed for vascular ultrasound!”

This vascular exam table allows each examiner to position the patient, and themselves, optimally for any type of Vascular Laboratory test. It has the ability to achieve a greater tilt in reverse Trendelenburg than any other table I have used and, while in this position, can elevate to bring the distal leg in easy reach. There are adjustable foot rests as well as a comfortable patient restraint strap for safety. These features are a great advantage when performing venous studies. Side support wedges are available to assist with lateral decubitus positioning for abdominal duplex studies. You can choose to add Fowler, head support or arm supports depending on the range of studies performed in the laboratory and the preferences of the technologists.”

Patricia A Poe,  
BA RVT FSVU  
Director Noninvasive Vascular Laboratory Services, UC Health

## VASCULAR TABLE W/ FOWLER

#66783-T\* 27" W #64219-T\* 30" W

FEATURES	
2 Section Top	27" (69cm) or 30" (76cm) wide x 72" (183cm) long
Backrest	34" (86cm) long
Seat	38" (97cm) long
Motion 1	Electric Height Range 23" - 40" (58-102cm)
Motion 2	Electric Trendelenburg/Reverse Tilt $\pm 15^\circ$
Motion 3	Electric Additional Reverse Trendelenburg 0-25° (40° total)
Motion 4†	Electric 0-75° Backrest (at 40° max tilt, 70° functional)
Controls	Multi-function hand control
Weight Capacity	550 lb (250kg)
Product Weight	452 lb (205kg)
Padding	3" (8cm) Comfort Foam™
Fabric	Premium, PVC free TerraTouch™
Included Features	4" (10cm) locking casters, Integrated foot board (split, drop away), Paper roll holder, Patient safety strap, Side rails (2) 23.5" (60cm) long x 6" (15cm) tall (from surface of table)
Warranty	3 years parts, 2 years labor
Safety Listings	FDA listed, CE marked, cETLus listed, CB Certificate

OPTIONS must be ordered with table.		#
Accessory Mounting Plate	Fowler end	62123
Adjustable Access/Back Support	Left side 0-85°	73133
Adjustable Access/Back Support	Right side 0-85°	73132
Central Base Locking System	Not available with Patient Lift Compatible Base	61777
Foot Control	Height, Trendelenburg, Backrest, Vascular	65679
Non-USA electric system	Please contact us for order details	73134
Patient Lift Compatible Base	Not available with Central Base Locking System	65893
Sliding Cardio Panel - Manual	30" (76cm) width table, left side opens 15" (38cm)	73130
ACCESSORIES order any time.		#
Detachable Arm Board	Use with T-rail adapter 5" (13cm) wide x 20.5" (52cm) long	62192
QuickLock™ Head Rest (black) & AeroCel Pad	Comfortable, adjustable prone or supine support (requires mounting plate)	PKG7554-T*
Table Extender	24" (61cm) wide x 12" (30cm) long (requires mounting plate)	63487
T-rail Adapter 8" (20cm) long	Attaches to the backrest for use with USA format T-rail attachable accessories.	61902

\*Fabric color code must be specified.

# ULTRASOUND FEATURES & OPTIONS

## CENTRAL BASE

### LOCKING SYSTEM #61777

Easily lock your table into place with our unique system that allows locking from both sides of the table.



OPTIONAL

## SIDE RAILS #61781

Increase stability and security for your patient. Fold down out of the way when not in use. 23.5" (60cm) long x 6" (15cm) tall (from surface of table)



STANDARD

## FULL FUNCTION CONTROLS

#enquire for part number

You may choose to have two controls: two foot or one hand and one foot.



Multi-function foot control



Multi-function hand control

OPTIONAL

## PATIENT LIFT COMPATIBLE BASE #65893

This option allows the use of patient lifts and easy wheel chair transfers to minimize or eliminate caregiver injuries associated with patient transfers. The high clearance base permits all patient lifts to slide easily under the center of the table for stable transfers while not increasing the low height range of the tables that enable easy wheel chair transfers. Must be ordered with table.

- Includes larger, 5" (13cm) diameter Heavy Duty locking casters
- Provides 6.5" (17cm) clearance for patient lift
- Central Base Locking System not available with this option



OPTIONAL

## ADJUSTABLE ACCESS BACK SUPPORT

Left: #73133 Right: #73132

Adjustable with 5 positions 0-85°, allowing easy access for sonographer to the far side and back support for patients. 10" (25cm) wide x 15.5" (39cm) long



OPTIONAL

## MANUAL SLIDING CARDIO PANEL #73130

The sliding cardio panel allows you to adjust the opening to the size you need, up to 15" (38cm). 10" (25cm) wide x 28" (71cm) long. Great for left or right handed scanning. Can also be used as an armrest. Available on left side of 30" (76cm) width tables.



OPTIONAL

## ACCESSORY MOUNTING PLATE

#62123

Add a face rest or table extender to your table.



OPTIONAL



# ULTRASOUND ACCESSORIES

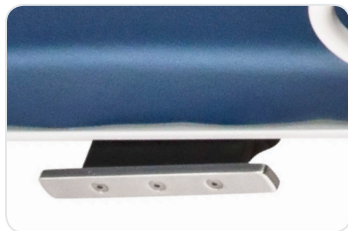
## DETACHABLE ARM BOARD #62192-T\*

Attaches to the T-Rail Adaptor and rotates over 140 degrees. 5" (13cm) wide x 20.5" (52cm) long (Requires T-Rail Adaptor)



## T-RAIL ADAPTOR #61902

Multiple locations allow you to choose the best spot for this easily installed & removed accessory capable of handling up to 150 lb (68kg). Can be used with any American standard accessory. 8" (20cm) long



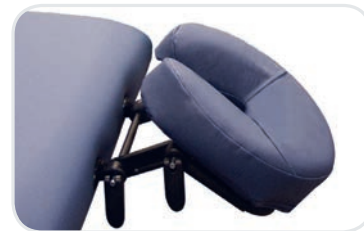
## TABLE EXTENDER #63487-T\*

Lengthens the table by 12" (31cm) to 84" (213cm) allowing for access to the patient's neck for carotid artery exams and thyroid exams. 24" (61cm) W x 12" (31cm) L



## QUICKLOCK™ HEAD REST & AERO-CEL PAD #PKG7554-T\*

The platform allows precise cervical flexion and height positioning over a wide range for both prone and supine treatments. (Requires Accessory Mounting Plate)



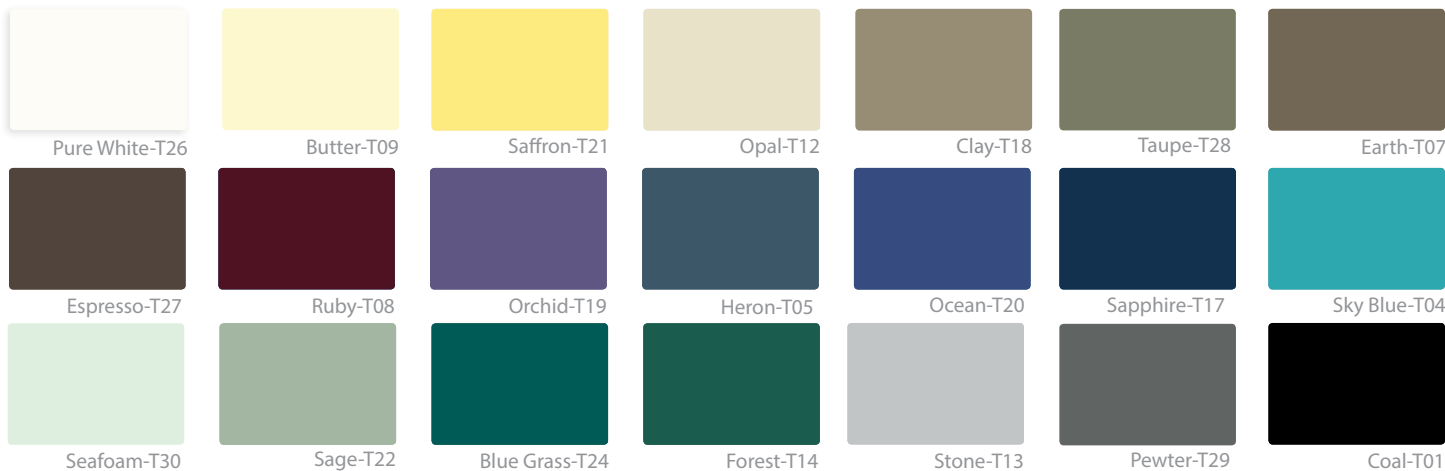
## TERRATOUGH™ FABRIC

Meets the requirements of ISO 10993-1:2009 Biological Evaluation of Medical Tables & passes testing for Cytotoxicity, Skin Irritation & Sensitization as well as CA TB117 Fire Retardance testing. Please refer to the product cleaning instructions for a list of approved cleaners and disinfectants.

## PADDING



3" Comfort Foam™  
More comfort and support



We strive to ensure that the colors displayed on our product imagery (online and in print) are as accurate as possible. However, due to the limitations of printers, scanners, computer monitors, and other equipment, the colors may not be accurate.

### CONTACT:

### View our full line of Medical products:

<https://www.oakworksmed.com/pdfdocs/oakworks-medical-catalog/>

717.235.6807 [www.oakworksmed.com](http://www.oakworksmed.com) email: [customerservice@oakworks.com](mailto:customerservice@oakworks.com)